

TABLE OF CONTENTS

1. INTRODUCTION	3
WELCOME	3
ABOUT THIS MANUAL	3
CLAVIA ON THE INTERNET	3
2. INSTALLATION	4
SYSTEM REQUIREMENTS	4
CONNECTIONS	4
INSTALLING THE SOFTWARE.....	4
3. USING THE PROGRAM	5
BASIC SETTINGS	5
Selecting MIDI In & Out ports.....	5
DOWNLOAD A PROGRAM BANK TO THE SYNTH	6
UPLOAD AND REARRANGE A PROGRAM BANK	8
Upload a Program Bank	8
Rearrange Programs in a bank.....	8
AUDITION OF PC SOUND FILES IN THE SYNTH	9
4. REFERENCE SECTION	11
OVERVIEW.....	11
The Nord Sound Manager windows.....	11
Icons in Nord Sound Manager file window	11
FILE.....	12
New.....	12
Open	12
Open Folder	12
Close	12
Save	12
Save As	12
Save To Folder.....	12
Quit.....	12
EDIT	12
Cut.....	12
Copy.....	12
Paste	13
Delete.....	13
Select All.....	13
SETUP.....	13
MIDI.....	13

UPLOAD 13

- Programs (Bank1-8)..... 13
- Performances (Bank1-2) 13
- Receive Manual Dump 13

DOWNLOAD 14

- Programs/Performances 14

TOOLS..... 16

- Send Sound when Selected..... 16
- ReNUMBER Programs 16
- Sort On Program Numbers..... 16
- Sort On Names..... 16
- Sort On Categories 16

WINDOWS 16

- Stay on top 16
- Adjust frame to clients 16
- Cascade..... 17
- Tile Horizontally 17
- Tile Vertically 17
- Arrange Icons..... 17
- List of currently open windows 17

HELP 17

- About..... 17

SPECIAL FUNCTIONS 17

- Change number/rename/change Category 17
- Program/Performance file pop-up..... 18
- Drag and drop files between windows..... 19
- Visual notifications in the window..... 19

1. INTRODUCTION

WELCOME

Thanks for using the Nord Sound Manager librarian software! The Nord Sound Manager program for Windows is designed for easy backup, transferring, rearranging and sharing of Nord Lead 3/Rack 3 Programs and Performances. By using the Nord Sound Manager you can easily rearrange sounds and tailor-make Program/Performance Banks for gigs, projects etc. Also, you don't have to use a sequencer for backing up your sounds. The sounds are saved as raw binary MIDI Sysex files for best versatility.

ABOUT THIS MANUAL

This manual is arranged mainly as a reference manual describing all the functions of the Nord Sound Manager. In many cases you'll also get tips on how to practically use the functions. When reading this manual as a digital PDF file, you will need Adobe Acrobat Reader 4.0 or later. This program can be downloaded, free of charge, at <http://www.adobe.com>.

In Adobe Acrobat Reader it is possible to use special navigation features like hyperlinks. This means that you can click with the mouse on a word or sentence and automatically get to the location indicated by the word/sentence. To better show what words or sentences are hyperlinked in this manual, these words are written in *magenta*.

CLAVIA ON THE INTERNET

If you have access to the Internet, you're very welcome to visit <http://www.clavia.se>. There you will find the latest information about the Nord Sound Manager and other Clavia products. You'll also be able to download new updates and new Nord Lead 3/Rack 3 sounds for use with the Nord Sound Manager, free of charge.

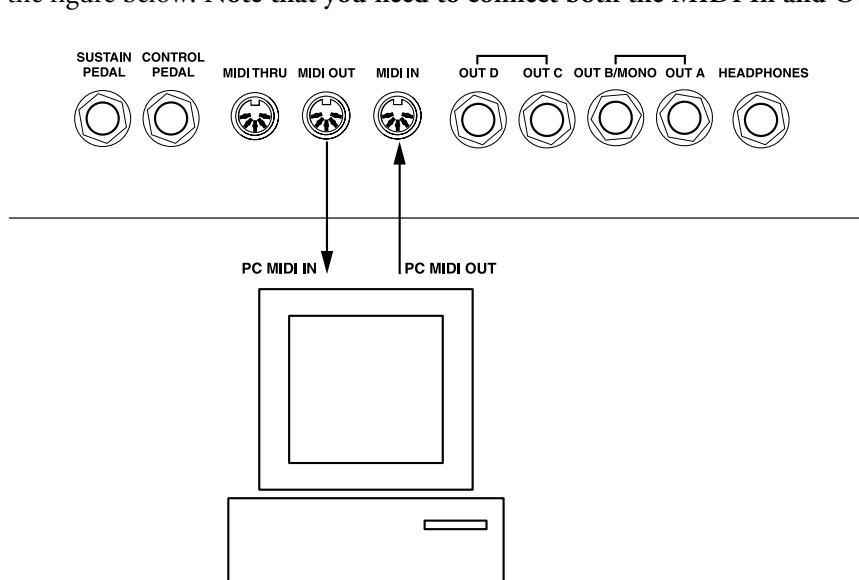
2. INSTALLATION

SYSTEM REQUIREMENTS

The Nord Sound Manager software requires a PC running Windows95/98/ME/NT4/2000/XP. The Nord Sound Manager program is designed for minimum 800 x 600 pixels screen area and 16-bit color (thousands). For a full installation, including all the Nord Lead 3/Rack 3 Program and Performance Banks, a hard disk space of 2.5 Mb is required. The PC must also be equipped with a MIDI interface with a previously installed MIDI Driver. **Note that when you're running the Nord Sound Manager program, no other MIDI application must interfere on the selected MIDI port!**

CONNECTIONS

Connect the MIDI cables between the Nord Lead 3/Rack 3 and the PC's MIDI interface according to the figure below. **Note that you need to connect both the MIDI In and Out for full functionality!**



INSTALLING THE SOFTWARE

1. Download the 'InstallNordSoundManager V1_02.zip' file to your PC hard disk and unzip the file using for example WinZip.
2. Double-click the 'InstallNordSoundManager V1_02.exe' file and follow the instructions in the installation program. All the necessary files are included in the installation file - you won't need any additional components to complete a full installation. The complete V1.2 Sound Library is also included in the installation file!
3. When the installation is completed you're set to start the Nord Sound Manager program.

3. USING THE PROGRAM

BASIC SETTINGS

Start the Nord Sound Manager program by double-clicking the icon or by selecting it from the Start menu in Windows. The following will be displayed on the computer screen:



SELECTING MIDI IN & OUT PORTS

Select Setup|MIDI (or press Ctrl+M). The following window is displayed:



Select MIDI In and Out ports from the drop-down menus and click OK.

The Nord Sound Manager program uses the full bandwidth of the selected ports to transfer and receive data. Therefore, no other MIDI application must interfere on the selected MIDI ports!

DOWNLOAD A PROGRAM BANK TO THE SYNTH

1. Select **F**ile|**O**pen Folder and select a folder that contains the Programs you want to download to a Bank in the synthesizer (in this example we select SoundBank 1 of the V1.2 factory library). A new window containing the Programs is displayed:



2. Select **D**ownload|**P**rograms. The following window is displayed:



3. On the Nord Lead 3/Rack 3 synthesizer, press the Synth button and then the Down Navigator button repeatedly until you get to the Program Receive menu.



4. Select the Bank in the synthesizer you wish to erase and replace with the Programs of the Nord Sound Manager window. You can select any Bank you wish - it doesn't have to be the same Bank number as in the Nord Sound Manger window. Press the Right Navigator button on the synthesizer twice. **Note: pressing the RIGHT NAVIGATOR button the second time will permanently erase the content of the selected Bank. Make sure you don't erase Performances that you want to keep!** The synthesizer is now stand-by to receive the Programs:



5. Now, click the OK button to download the Programs to the Bank in the synthesizer. A progress bar indicates the transmission of the Programs to the synthesizer:



Note that the destination Bank is always determined from the synthesizer itself - you cannot do this in the Nord Sound Manager program.

UPLOAD AND REARRANGE A PROGRAM BANK

In some situations you may want to rearrange the order of Programs in a Bank and then later download the Programs back to the synthesizer. This can be useful when you want the Programs in a different order for the gig or project. Begin by uploading a Program Bank from the synthesizer to the PC:

UPLOAD A PROGRAM BANK

Select Upload|P|rograms|B|ank1(or another Bank number if you like). A progress bar appears displaying the upload process. When all Programs are uploaded the Program files are displayed in a new window named 'Program Bank 1':



REARRANGE PROGRAMS IN A BANK

MOVE PROGRAMS

In the 'Program Bank 1' window you can move each individual Program file to a new location within the Bank by simply dragging the file up or down in the window. Click-hold a Program file, drag it to the new location and then release the mouse button. The Program's original memory location number won't change at this moment - only the order in the 'Program Bank 1' window.



RENUMBER PROGRAMS

Once you're satisfied with the new Program order, select Tools|Renumbr Programs:



Now, the Programs are renumbered according to their new positions and you are set to download the Programs back to the synth.

AUDITION OF PC SOUND FILES IN THE SYNTH

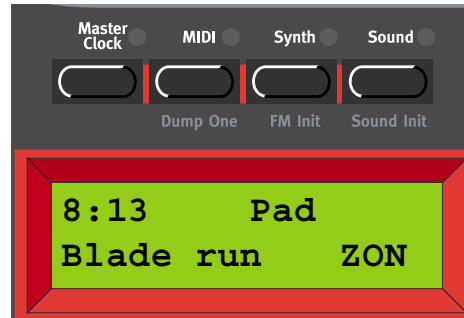
You can quickly and easily browse through and listen to Sound files stored on the PC by automatically downloading them, one by one, to the active Slot of the synthesizer. Let's take a look at the following example:

1. Choose File|Open Folder and select the folder SoundBank1 from the V1.2 factory presets library. A new window named 'SoundBank1' is opened and all the Programs of that folder are displayed:



2. Select Tools|Send Sound when Selected.

3. Highlight a Sound in the SoundBank1 window by clicking on a Sound file. The Sound is automatically downloaded to the active Slot of the synthesizer and you can play and audition it.



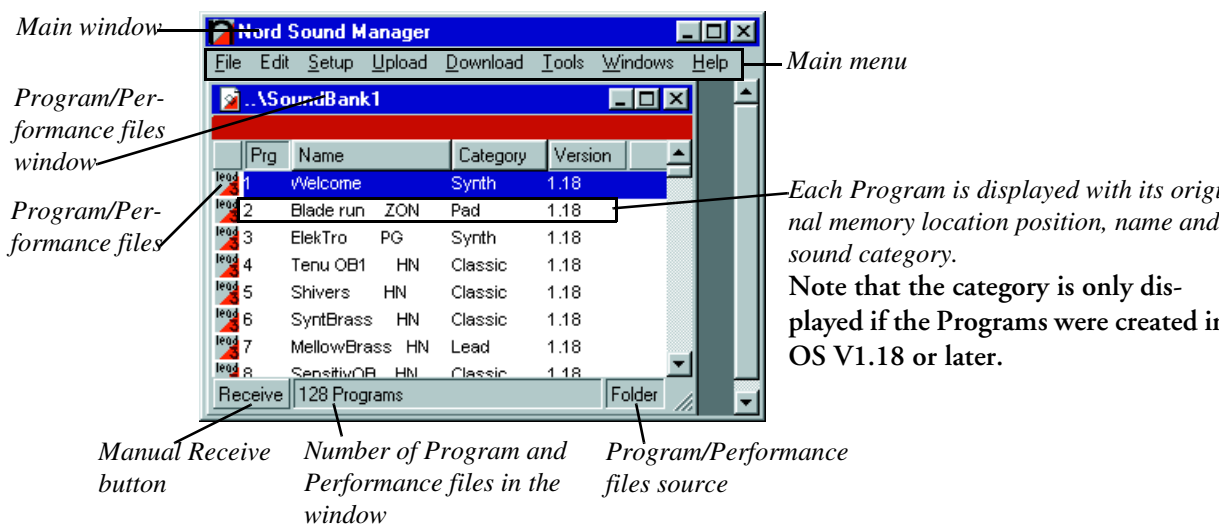
4. Now, click on a new Sound file or use the Up/Down arrow keys of the computer keyboard to automatically download a new Sound to the active Slot. This way you can quickly and easily listen through a complete Bank of Sounds without needing to download the complete Bank to the synthesizer.

4. REFERENCE SECTION

OVERVIEW

In the Nord Sound Manager program the usual Windows keyboard commands are available. The drop-down menus can be accessed by pressing the Alt key and the underlined letter in the menu bar. Most of the commands can also be accessed by pressing the Ctrl key together with the letter shown next to the command name in the drop-down menus.

THE NORD SOUND MANAGER WINDOWS



ICONS IN NORD SOUND MANAGER FILE WINDOW

NORD LEAD 3/RACK 3 PROGRAM SYSEX FILE



A Nord Lead 3/Rack 3 Program Sysex file is indicated with this light gray and red icon with the text 'lead 3'.

NORD LEAD 3/RACK 3 PERFORMANCE SYSEX FILE



A Nord Lead 3/Rack 3 Performance Sysex file is indicated with this dark gray and red icon with the text 'lead P 3'.

NON-NORD LEAD 3/RACK 3 SYSEX FILE



A non-Nord Lead 3/Rack 3 Sysex file is indicated with a blue question mark.

INVALID/CORRUPT SYSEX FILE



A corrupt Sysex file is indicated with a red 'E' letter.

FILE

NEW

Opens a new empty window. Use this command if you're planning to open (see below) separate Program or Performance files or if you're dumping sounds from the synthesizer using the 'Dump One' or 'Program Dump'/'Performance Dump' functions on the Nord Lead 3/Rack 3.

OPEN

Use this command to open Program or Performance Sysex files stored on the computer. The files will be opened in the currently active window.

OPEN FOLDER

Opens the content (sound files) of the selected Folder in a new window.

CLOSE

Closes the currently active window.

SAVE

Use this command to save Program or Performance Sysex files to their original destination on the computer. Unless the Program/Performance name has been changed, the Save function is inactive. **Note that it's also possible to save several Program/Performance files as a single Sysex file.**

SAVE AS

Use this command to save Program or Performance Sysex files on the computer. You could save the file with a new name if you like. **Note that it's also possible to save several Program/Performance files as a single Sysex file.**

SAVE TO FOLDER

Use this command to save single Program or Performance files in a specific folder on the computer.

QUIT

Use this command to exit and quit the Nord Sound Manager program.

EEDIT

CUT

Use to "cut" a Program or Performance file and place in the temporary memory buffer.

COPY

Use to copy a Program or Performance file and place in the temporary memory buffer.

PASTE

Use to paste a Program or Performance file from the temporary memory buffer and place in the currently active window.

DELETE

Delete the currently selected Program or Performance files

SELECT ALL

Selects all Program or Performance files of the currently active window.

SETUP**MIDI**

Select MIDI In and Out ports from the drop-down menus and click OK. **The Nord Sound Manager program uses the full bandwidth of the selected ports to transfer and receive data. Therefore, no other MIDI application must interfere on the selected MIDI ports!**

UPLOAD**PROGRAMS (BANK 1-8)**

With this command you can upload all Programs in a selected Program Bank from the synthesizer to a new window in the Nord Sound Manager. This is the fastest way of creating a backup of the content of the synth's internal Program memory.

PERFORMANCES (BANK 1-2)

With this command you can upload all Performances in a selected Performance Bank from the synthesizer to a new window in Nord Sound Manager. This is the fastest way of creating a backup of the content of the synth's internal Performance memory.

RECEIVE MANUAL DUMP

Select Upload|Receive Manual Dump to open a new empty window in the Nord Sound Manager program and to activate Receive Manual Dump mode. Now, you can manually dump Programs or Performances from the synthesizer to the Nord Sound Manager by using the 'Dump One' or 'Bank Download' functions of the Nord Lead 3/Rack 3.

This is the most convenient function to use when creating a complete back-up of all the sounds in the Nord Lead 3/Rack 3. Activate Receive Manual Dump, then choose Program Dump or Performance Dump from the Synth menu of the Nord Lead 3/Rack 3. Select 'All' with the Rotary Dial and press the Right Navigator button on the synth to dump all Programs/Performances to the Nord Sound Manager program. When you're done, save all the sound files as a single Sysex file using the File|Save As command.

Receive Manual Dump mode is indicated by the Receive button to the bottom left in the window flashing red. To deactivate Receive Manual Dump mode, click on the Receive button in the window:



Note that you can activate the Receive Manual Dump function in any window at any time by clicking the Receive button.

DOWNLOAD

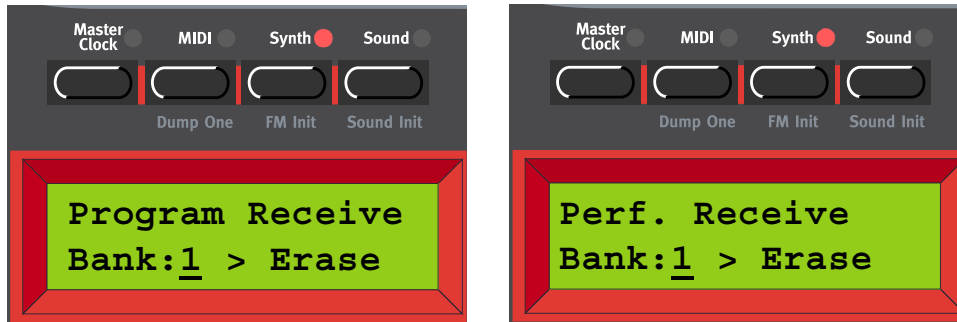
PROGRAMS/PERFORMANCES

Use this command to download all Programs or Performances of the currently active window to a Program or Performance Bank in the synthesizer.

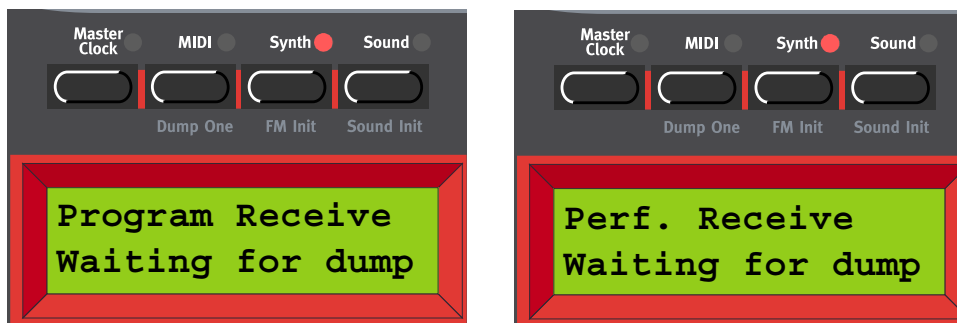
1. Select Download|Programs or Download|Performances. The following window is displayed:



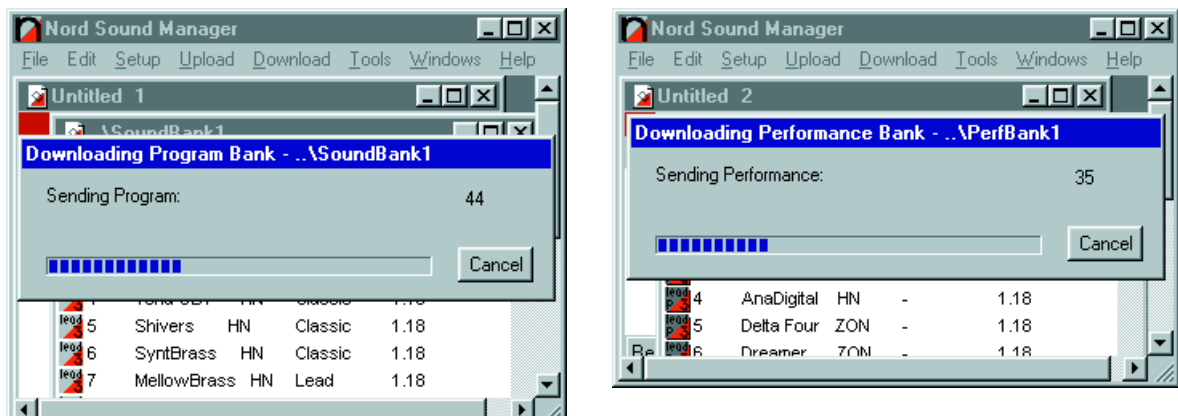
- On the Nord Lead 3/Rack 3 synthesizer, press the Synth button and then the Down Navigator button repeatedly until you get to the Program Receive/Perf. Receive menu.



- Select the Bank in the synthesizer you wish to erase and replace with the Programs/Performances of the Nord Sound Manager window. You can select any Bank you wish - it doesn't have to be the same Bank number as in the Nord Sound Manager window. Press the Right Navigator button on the synthesizer twice. **Note: pressing the RIGHT NAVIGATOR button the second time will permanently erase the content of the selected Bank. Make sure you don't erase Programs or Performances you want to keep!** The synthesizer is now stand-by to receive the Programs/Performances:



- Now, click the OK button to download the Programs or Performances to the Bank in the synthesizer. A progress bar indicates the transmission to the synthesizer:



Note that the destination Bank is always determined from the synthesizer itself - you cannot do this in the Nord Sound Manager program.

TOOLS

SEND SOUND WHEN SELECTED

This function makes it possible to listen to Sounds in a Nord Sound Manager window by automatically downloading them, one by one, to the active Slot of the synthesizer. Select **T**ools|Send Sound when Selected. Then click on a Sound file or use the Up/Down arrow keys of the computer keyboard to automatically download the Sound to the active Slot of the synthesizer. This way you can quickly and easily listen through a complete Bank (window) of Sounds without needing to download a complete Bank to the synthesizer. The 'Send Sounds when Selected' function is activated as soon as you select it, and you have to manually deactivate it by clicking **T**ools|Send Sound when Selected again.

RENUMBER PROGRAMS

When you have moved one or more Programs in a window to a new location you have to renumber them before you can download them in the new order to the synth. In the window you can move each individual Program or Performance file to a new location within the Bank by simply dragging the file up or down in the window. Click-hold a Program file, drag it to the new location and then release the mouse button. The Program's original memory location number won't change at this moment - only the order in the window. Once you're satisfied with the new Program/Performance order, select **T**ools|Renumber Programs. Now, the Programs are renumbered according to their new positions and you are set to download the rearranged Programs back to the synth.

SORT ON PROGRAM NUMBERS

When selected, the Programs or Performances in a window are displayed in numerical order. Alternatively, you can click on the Prg button in the window to activate this function.

SORT ON NAMES

When selected, the Programs or Performances in a window are displayed in alphabetical order. Alternatively, you can click on the Name button in the window to activate this function.

SORT ON CATEGORIES

When selected, the Programs (not Performances) in a window are displayed by Sound Category. Alternatively, you can click on the Category button in the window to activate this function.
Note that the Category is only displayed if the Programs were created in OS V1.2x or later.

WINDOWS

STAY ON TOP

Select to force the Nord Sound Manager program to always remain in the foreground on the computer screen.

ADJUST FRAME TO CLIENTS

Select to automatically adjust and resize the Nord Sound Manager main window to the open Program/Performance windows.

CASCADE

Display multiple Program/Performance windows in a cascaded configuration.

TILE HORIZONTALLY

Display multiple Program/Performance windows in a horizontally tiled configuration.

TILE VERTICALLY

Display multiple Program/Performance windows in a vertically tiled configuration.

ARRANGE ICONS

Display minimized Program/Performance windows in alphabetical order in a vertically tiled configuration.

LIST OF CURRENTLY OPEN WINDOWS

Here, all Program/Performance windows in the Nord Sound Manager program are shown. You can select any of the windows by clicking on them in the list.

HELP**ABOUT**

Select to display info about the Nord Sound Manager program.

SPECIAL FUNCTIONS**CHANGE NUMBER/RENAME/CHANGE CATEGORY**

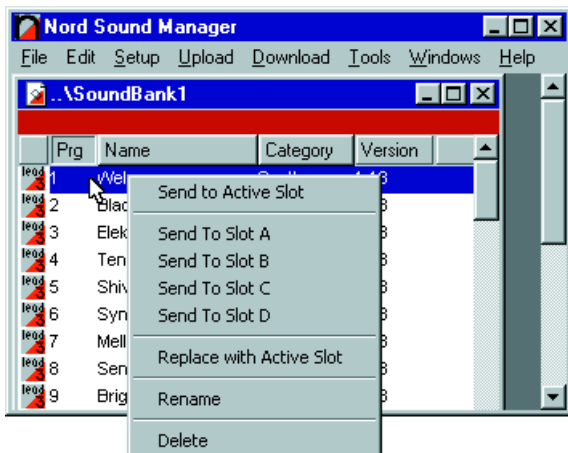
Double-click on a Program or Performance file to edit its program number, the name and/or the Category (Program files only):



Note that the Program/Performance file isn't changed on the computer until you re-save the file or Bank.

PROGRAM/PERFORMANCE FILE POP-UP

If you right-click on a Program or Performance file the following pop-up window is displayed:



SEND TO ACTIVE SLOT/SEND TO SLOTS

Select to download the sound to the active Slot of the synthesizer. For Performances all four Slots will be used. This will automatically delete the sound(s) currently in the active Slot (all four Slots for Performances).

SEND TO SLOT A-D (PROGRAMS ONLY)

Select to download the sound to a specific Slot of the synthesizer. This will automatically delete the sound currently in the selected Slot.

REPLACE WITH ACTIVE SLOT/REPLACE WITH SLOTS

Select to replace the selected Program or Performance file with the sound currently in the active Slot(s) of the synthesizer. This command is very useful if you're editing a sound in the synthesizer and quickly want to replace the original sound in the window with the edit.

Example:

Let's say you want to adjust the Output Level on several sounds in a folder and then re-save the sounds to the folder.

1. Open the folder using the File|Open Folder command.
2. Select Tools|Send Sound when Selected.
3. Click on a Sound in the window to automatically download it to the active Slot of the synthesizer.
4. Adjust the Output Level on the synthesizer.
5. Right-click on the Sound in the window and select 'Replace with Active Slot'. Now, the edited Sound replaces the original Sound file in the window.
6. Repeat the procedure from step 3 for the other Sounds you wish to edit.
7. Select File|Save to Folder to re-save all the Sounds in the window.

RENAME

Select to edit the program number, the name and/or the Category (Program files only).

Note that the Program/Performance file isn't changed on the computer until you re-save the file or Bank.

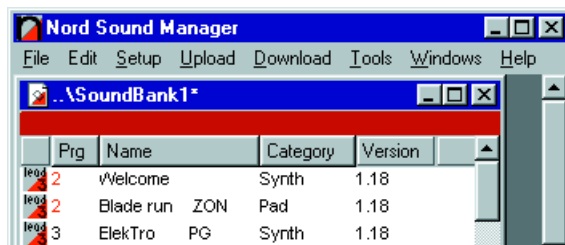
DELETE

Select to delete the Program/Performance from the window.

Note that the Program/Performance file isn't deleted from the computer until you re-save the Bank (window) on the computer.

DRAG AND DROP FILES BETWEEN WINDOWS

If you have several Program/Performance windows open you can easily copy Programs and Performances between windows. Just drag a file from one window and drop in another, at the wanted location. You could also mark several files and copy all of them by dragging and dropping them onto another window.

VISUAL NOTIFICATIONS IN THE WINDOW**RED PRG NUMBER**


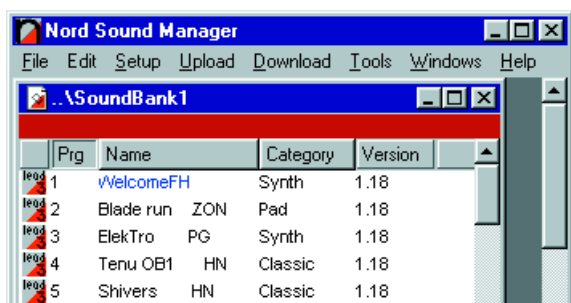
	Prg	Name	Category	Version
1004	2	Welcome	Synth	1.18
1004	2	Blade run	ZON Pad	1.18
1004	3	ElekTro	PG Synth	1.18

If two or more files have the same Prg number, this is indicated with red color. This means that the files cannot be downloaded to the synthesizer since sounds cannot have the same Prg number in the synthesizer. To prepare these files for download you first have to use the Tools|Renumber Programs function described on [page 16](#), or manually change the Prg number(s) (see [page 17](#)).

RED FILE NAME TEXT


	Prg	Name	Category	Version
1004	1	Welcome	Synth	1.18
1004	2	Welcome	Pad	1.18
1004	3	ElekTro	PG Synth	1.18
1004	4	Tenu OB1	HN Classic	1.18

If two or more files have the same Name, the file name is indicated with red color. This means that the files cannot be saved to the computer using the File|Save to Folder command since files cannot have the same name when stored in the same folder. To be able to store the file, change the name using the Rename function described on [page 17](#).

BLUE FILE NAME TEXT

If a sound file name has been changed in Windows Explorer it will appear with blue text in the Nord Sound Manager program when you use the File|Open Folder command. This is because the changed name is not the same as the name stored in the Sysex file. To change the name in the Sysex file use the Rename function described on [page 17](#).

